

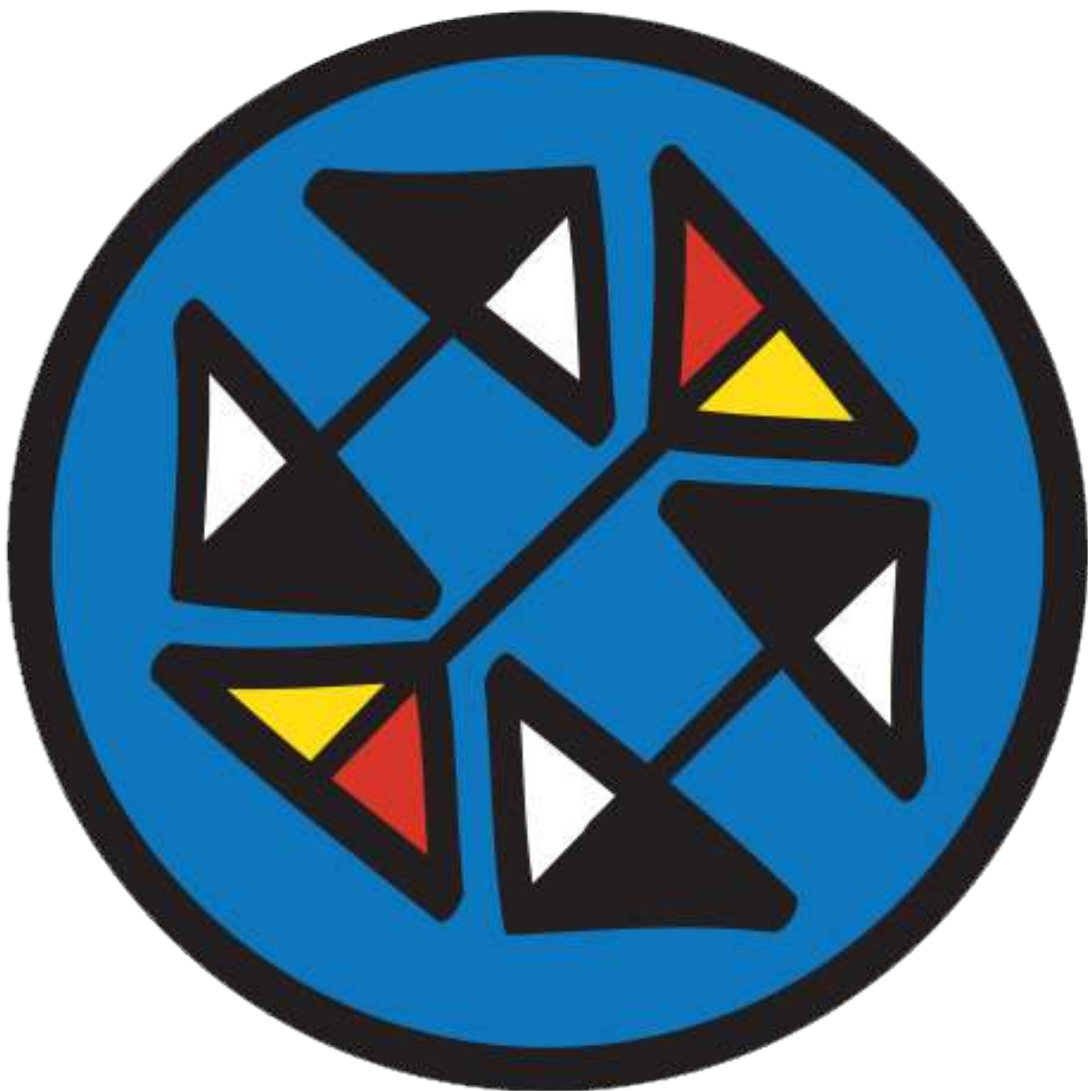
---

# SOLIDARITY ESWATINI

Fundraising & Action Report (June-August)

Mbabane, Eswatini - 12 August 2020

---



---

## Overview

Solidarity Eswatini is a volunteer mutual aid group formed in May 2020 in response to the socioeconomic shocks of the COVID-19 pandemic and the urgent needs being felt by vulnerable communities across the country.

Through creativity, solidarity and the forging of local partnerships and connections, we aim to make aid and assistance more than just about charity – it can be the building of mutual bridges for a more resilient, equitable and sustainable future.

### Solidarity Eswatini's Main Goals

- Support and connect communities & community action groups
- Link action groups with relevant/necessary/required resources
- Fundraising and resource assistance to groups/communities in need
- Promote localised, solidarity-based aid and empowerment solutions
- Link and utilise available, local resources wherever possible
- Utilise social media to share news, calls-to-action and awareness campaigns
- Ensure dignity & equality for everyone in Eswatini

This document is a results and expenditure summary of our first round of fundraising & action between June - August 2020. So.... what did we do?

We raised **E190,545 (\$11,074)** through individual donations

We assisted **246 families & 13 community kitchens.**

We distributed **100 seasonal grower packs** to community gardens.

We bought **512 cabbages, 1,024 butternuts** and **1,536 tomatoes** directly from local farmers.

And more....



## Fundraising Amounts

Our initial fundraising target on [chuffed.org](https://chuffed.org) was \$10,000 - and we exceeded this by reaching exactly **\$11,000** at the end of our campaign!

Though [chuffed.org](https://chuffed.org) did not take any fees itself, some money was deducted along the way due to various credit card, PayPal and bank transfer fees. The full breakdown of the crowdfunding money flow (from donation to final account in Eswatini) is shown below:

Steps	Dollars		Emalangeneni	
<b>Chuffed Crowdfunder</b>	<b>US\$</b>	<b>11,000</b>	<b>E</b>	<b>189,302</b>
Crowdfund Card Payment Fees	US\$	365	E	6,198
PayPal fees	US\$	153	E	2,600
Exchange Rate Fluctuations	US\$	23	E	397
Forex Fees	US\$	65	E	1,112
<b>Total Fees</b>	<b>US\$</b>	<b>606</b>	<b>E</b>	<b>10,307</b>
<i>Total % of Crowdfunding target lost to banking fees</i>		5.51%		
<b>Total Crowdfunding Amount Received by Solidarity Eswatini on 5th July 2020</b>	<b>US\$</b>	<b>10,394</b>	<b>E</b>	<b>178,995</b>

After several weeks of waiting for all the donations to reflect in the fundraiser's bank account in South Africa, we finally received the total amount (after all fees) in our bank account in Eswatini : **E178,995**

On top of this we raised some local donations (E11,550), separate to the crowdfunder. These are reflected in the table below to show the full total we raised over this period:

Donations From:	# of Donors	Dollars		Emalangeneni	
Chuffed Crowdfunder	120	US\$	10,394	E	178,995
Local Donations	5	US\$	680	E	11,550
<b>Total Fundraising Goal (Local + Crowdfunder)</b>	<b>125</b>	<b>US\$</b>	<b>11,074</b>	<b>E</b>	<b>190,545</b>

We ultimately raised **E190,545** - and this was our final budget for spending on the various items for each community and community group.

## Action & Expenditure (Money Well Spent)

The funds were used to purchase:

- **Family Care Packages** (Non-perishable food items & hygiene products)
  - Cost was **E500- each** (\$29) which includes:
    - *Maize meal 5kg, Rice 2kg, Flour 1kg, Soup 500g, Sugar beans 2kg, Pilchards 400g, Soya Mince 500g, Laundry soap, Body soap, Sanitiser 1L, Toothpaste, Tea 100, Salt 1kg, Sugar 2kg, Cooking oil 2L, Milk Powder 750g, Toilet paper rolls, Matches, Candles, Boiled sweets, Face Masks*
- **Family vegetable box** (from local farmers)
  - Cost was **E50- each** (\$3) which includes:
    - *2 Cabbages, 5 Butternut, 8 tomatoes*
- **Grower-packs** (seeds, seedlings and compost for community gardens)
  - Cost was **E246- each** (\$14) which includes:
    - *Maize seeds 500g, Bean seeds 500g, 100 seasonal-variety seedlings, compost*
- **Bulk food pack** (non-perishable and fresh) for community care points/kitchens
  - Cost was **E1,262- each** (\$74) which includes:
    - *Maize Meal 50kg Sack, Porridge 10kg, Salt 10kg, Cooking Oil 20lt, Sugar Beans 10kg, Rice 30kg*

The allocation of funds was split between the areas based on immediate needs identified by each community group. The breakdown of how many items each area received was therefore dictated by each group, and the final numbers are seen below:

AREA	Family Package	Veg Box	Grower Packs	Bulk Food Pack
Vuvulane	70	70	40	2
Ezulwini/Lobamba	80	80	5	5
Mbabane	66	66	25	5
Pine Valley/Mbuluzi	30	30	30	1
<b>TOTALS</b>	<b>246</b>	<b>246</b>	<b>100</b>	<b>13</b>

We purchased our items from the following local suppliers, all of whom provided generous discounts allowing our available funds to go much further than anticipated:

### Buy n Save Spar Eswatini

- Provided family and bulk packages on discount, as well as free packing & delivery

### Vickery Seedlings

- Provided all grower kits at discount of around 40%

The following entities kept our costs low (& spirits high) with their support:

**Taiwanese Embassy** - Donated 900kg of rice for care points

**Business Eswatini** - Donated 900 face masks and 60 blankets for winter

**Yebo! Art & Design** - Provided free storage & transport for Ezulwini/Lobamba

**Cooper Properties** - Donated warehouse space for all Mbabane delivery / storage needs

**JohnBo Carpenters** - Provided discounted delivery services with their truck

**Eswatini Artisan Collaboration** - Donated 850 protective, reusable cloth masks

The final tally of expenditure is as follows:

NAME	DELIVERABLES	PAYMENT
<b>Total Solidarity Budget</b>		<b>E190,545</b>
Buy n Save	246 Family Packs & 13 Bulk Packs	E136,089
Vickery Seedlings	100 Grower Kits	E25,430
Vuvulane Farmers	512 cabbages, 1,024 butternuts and 1,536 tomatoes	E12,470
Fresh Produce Transport	Round trip Vuvulane - Mbabane	E2,500
Area Delivery Transport	Mbabane & Ezulwini Transport Costs	E550
Mbabane Sundries	Radios for 13 families in Sidwashini	E2,500
Solidarity Sundries	Website registration cost	E200
<b>Balance remaining</b>		<b>E10,806</b>

---

The balance remaining (E10,806) is in the Vuvulane OVC Foundation account and is allocated for the following:

1. Partly supporting the backyard veg garden projects. (Securing services to go towards solar water pumps and water tanks for the community borehole) To supply clean water for drinking and watering the gardens.
2. Partly used to buy fresh fruit, veg and meat for the Vuvulane children's weekly hot lunch meals.

**The partner groups that we worked with in each of the areas were:**

- Vuvulane Orphaned & Vulnerable Children Outreach Foundation (VOVCOF)
- Yebo! Action
- Waterford Kamhlaba United World College
- Mbabane Urban Garden



**SOLIDARITY  
ESWATINI**

We have records of all distributions in each area - each family hamper, care centre delivery and grower kit were signed and received by a household/centre representative - allowing us to track and trace (if necessary), and to have records for accountability and transparency. Please contact us if you have any queries on our actions or target areas.

consider that Dlamini elected to

she could not intentionally commit a crime of fraud.

the little money she had earned for her child's medical expenses

The employee will know her fate on July 6, 2020.

# Solidarity Eswatini raises E187 000 for COVID-19 hit communities

BY TIMES REPORTER

**MBABANE** – Talk about going all out to help the disadvantaged.

A local mutual aid group has raised US\$11 000 (approximately E187 000) for vulnerable communities in Eswatini that have been hit hard by the coronavirus pandemic.

Solidarity Eswatini, an umbrella group which links together existing organisations tackling food insecurity, set up the online crowd-funder earlier this month.

More than 120 individual donors helped them exceed their initial target of US\$10 000 in just three weeks. The group was motivated by how the coronavirus outbreak and subsequent lockdown measures exacerbated existing inequalities across the kingdom.

The group stated said it had noted that a growing number of emaswati were struggling to survive the sudden loss of income due to the lockdown restrictions, with no safety net to fall back on and limited access to healthcare should they fall ill.

"We're incredibly touched by the support and involvement from everyone that donated. People from around the world with connections to Eswatini have responded to the urgent call, each contributing what they are able to help us reach our target," said Dane Armstrong, member of Solidarity Eswatini.

According to Armstrong, the funds raised would be used to provide food parcels and meals for families and soup kitchens in several communities across the country, with fresh produce packages sourced directly from local farmers.

## Nurseries

Armstrong said they would also be partnering with local nurseries to provide fruit and vegetable seedlings, seeds and growing kits, as well as with local companies to offer hand sanitiser, face masks, and other hygiene necessities.

As the pandemic continues, local NGOs, action groups and community organisations that are responding to the urgent needs in their towns and communities will receive a share of the food and care hampers and grower kits in order to continue their work in the face of an ever-growing need.

The participating action groups include the Vuvulane OVC Outreach Foundation (VOVCOF), Yebo! Action, Waterford Kamhlaba Community Service and Mbabane Urban Garden.

VOVCOF Founder Khulekani Msweli said the funds raised would be used to help provide immediate food relief for families in Vuvulane, as well as address more long-term needs.

"We will be making sure that all of the most vulnerable families receive food parcels, but most



Some of the hampers which were provided by the Vuvulane Orphaned and Vulnerable Children Outreach Foundation (VOVCOF). Such assistance will be provided again this month. (Courtesy photo)



In May, meals were provided by VOVCOF

importantly we will be supplying seeds, seedling and other supplies for the implementation of sustainable home food gardens.

"A permaculturist will also be engaged so that we can educate families on how to best grow their own food. We have to not only help with people's immediate needs, but also focus on building more resilient communities in the long-term," he said. Solidarity Eswatini aims to shine a light on the work being done by these various groups, as well as others around the kingdom, linking them together wherever possible, and assisting with fundraising, resources and networking.

## Awareness

The organisation says its focus is not just on helping people, but about raising awareness and building confidence, power, and solidarity by bringing people together.

They will be working directly with people and groups who live in each local area as they know about their own community's needs and can have the biggest direct impact.

"The mutual aid we are seeing coming from individuals and



Yebo Action donated to Gelekekeni Care Point in May.

groups, both locally and internationally, is giving us a lot of hope in these difficult and uncertain times. Together we can respond to the needs of today while building bridges for tomorrow. More stories will be coming soon on local businesses and organisations assisting

us," highlighted Armstrong.

If you would like to support their work or get involved please get in touch - you can find out more about Solidarity Eswatini on Facebook, Twitter and Instagram, or email them at [solidarity.eswatini@gmail.com](mailto:solidarity.eswatini@gmail.com).

Newspaper article about the Solidarity Eswatini Fundraising efforts in the Times of Swaziland on 1st July 2020. A second article will be published in the media with the final results of the campaign.

---

## Conclusions & Reflections

A huge thank you to everyone that participated in this round of action - whether you donated online, helped pack boxes, deliver food, or plant seedlings, none of this would be possible without collective planning and action.

There are a lot of incredible and inspiring responses happening around the country at the moment, and we are proud to have been able to play our part, small as it is, in assisting where we can during these turbulent and uncertain times.

The fallout of the COVID-19 pandemic is going to have dire socioeconomic effects for months, and probably years, to come in Eswatini. We all need to be prepared to weather the storm, and the reality (in this era of rampant inequality) is that the most vulnerable segments of our population are yet again going to be the hardest hit.

We do not believe that food handouts are a sustainable solution, but in times of emergency we need to understand what the immediate needs are and do what we can to assist. However, we also need to keep one eye on tomorrow and help plant seeds and plant actions that will empower people, families and communities - and ultimately our country as a whole.

We look forward to continuing to work together in solidarity towards achieving dignity and respect for every single person in this country (during the pandemic, and beyond). Please look out for future actions and fundraisers that we put together, and get involved however you can.

Siyabonga!

### **What is *Mutual Aid*?**

*Caring for one another - Cooperation for the sake of the common good.*

Mutual aid isn't about "saving" anyone; it's about people coming together, in a spirit of solidarity, to support and look out for one another. A mutual aid group is a volunteer lead initiative where groups of people in a particular area join together to support one another, meeting vital community needs without the help of official bodies. They do so in a way that prioritises those who are most vulnerable or otherwise unable to access help through regular channels.

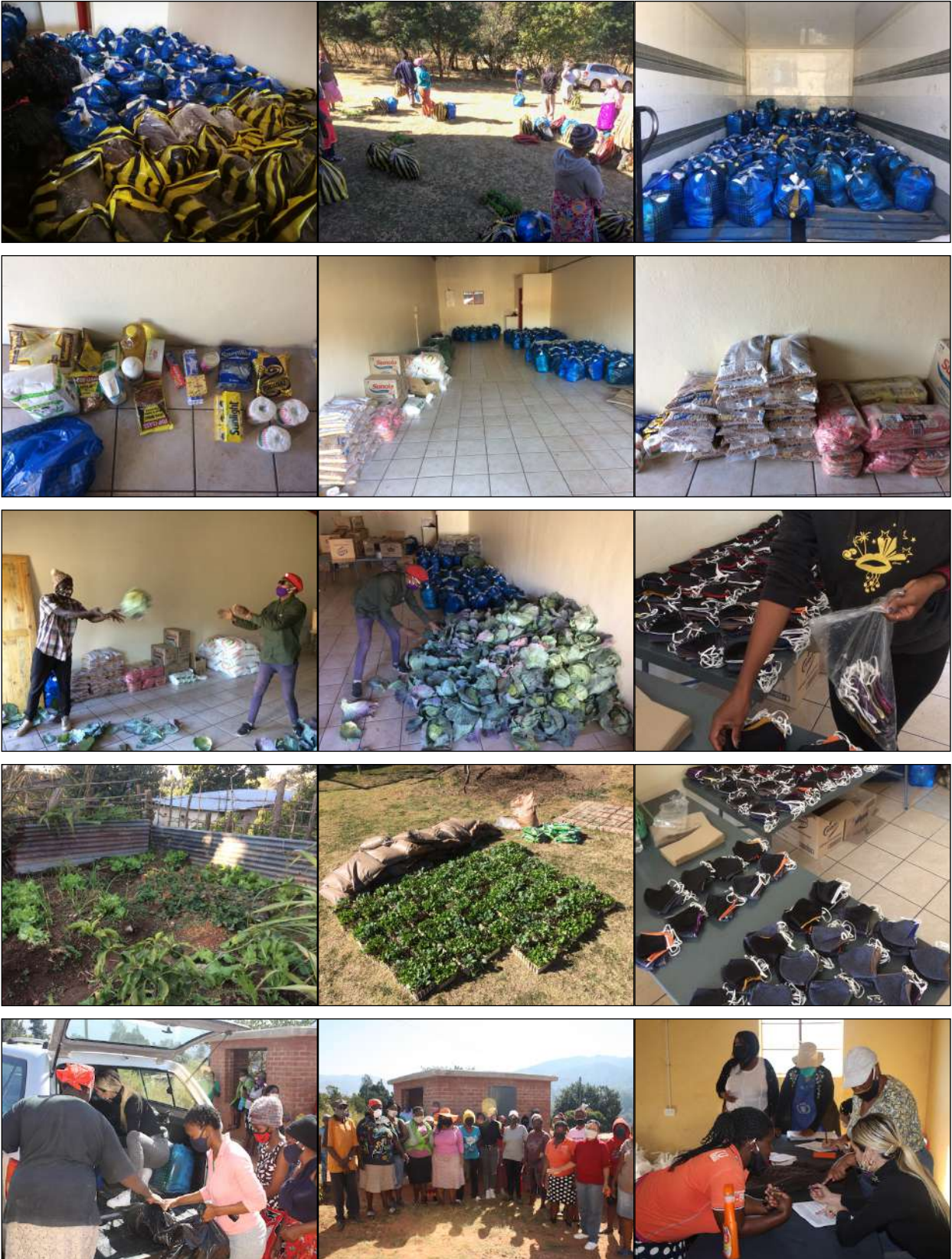


---

## Pictures

An assortment of images from our actions and deliveries around Mbabane, Ezulwini, Lobamba and Vuvulane. Follow us on social media to get regular updates.







# SOLIDARITY ESWATINI

Raising awareness, funds & resources for groups working in communities affected by the coronavirus pandemic  
 Kuletsa satiso, kucokelela imali nemathulusi etinhlangano letisebenta emimangweni lekhinyabetwe yiCorona Virus